



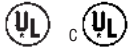
TENSIONED HORIZON ELECTROL®

Automatic Electric Projection Screen Model

SPECIFICATION DATA

DA-LITE SCREEN COMPANY, INC.
3100 North Detroit Street
Post Office Box 137
Warsaw, Indiana 46581-0137
Phone: 574/267-8101
800-622-3737
Fax: 574/267-7804
http:// www.da-lite.com
e-mail: info@da-lite.com

SUGGESTED SPECIFICATIONS: _____ projection screens, _____ (H) x _____ (W), electrically operated 120 volt (60 Hz) 2.4 amp. Shall have two specially designed motors mounted inside two rollers, to be quick reversal type, oiled for life, with automatic thermal overload cutout, integral gears, capacitor, embedded microprocessor control and an electric brake to prevent coasting. To have preset but adjustable limit switches to automatically stop the picture surfaces in the up, down and three intermediate positions. The fabric roller to be of rigid aluminum 3-3/16" in diameter. The mask roller to be of rigid aluminum 3-3/16" in diameter. Screen fabric to be seamless, flame-retardant and mildew resistant vinyl, with Da-Mat™, High Contrast Da-Mat™, Cinema Vision, High Contrast Cinema Vision, High Contrast Cinema Perf, Pearlescent, Audio Vision, High Contrast Audio Vision, Da-Tex (Rear) or Dual Vision surface with black masking borders standard. Each side of the fabric to have tab guide cable system to maintain even lateral tension and hold surface flat. To have masking fabric to convert the screen to different video formats. Custom slat bar with added weight maintains vertical tension on the screen surface. The ends of the aluminum slat to be protected by heavy-duty plastic plugs. Bottom of the masking fabric shall be formed into a pocket holding a flat aluminum bar. Case to be of wood and be finished with a primer coat, ready to accept final finish by others. To be complete with a six-button switch with a cover plate. Screen to be listed by Underwriters' Laboratories.



All viewing surfaces will be seamless.

Audio Vision, High Contrast Audio Vision and High Contrast Cinema Perf available in sizes up to 87" x 116" in Video Format.

DIMENSIONS

| Viewing Area H x W | | | | | | | | Overall Length of Case | | Overall Shipping Dimensions | | Approx. Shipping Weight | |
|--------------------|-----------|-------------|-----------|------------------|-----------|-------------------|-----------|------------------------|-----|-----------------------------|---------------|-------------------------|-----|
| NTSC (1.33) | | HDTV (1.78) | | Letterbox (1.85) | | Anamorphic (2.35) | | In. | Cm. | In. | Cm. | Lbs. | Kg. |
| In. | Cm | In. | Cm | In. | Cm | In. | Cm | In. | Cm. | In. | Cm. | Lbs. | Kg. |
| 43 x 57 | 109 x 145 | 32 x 57 | 81 x 145 | 31 x 57 | 79 x 145 | 24 x 57 | 61 x 145 | 79.75 | 203 | 11-1/2 x 11-3/4 x 89 | 29 x 30 x 226 | 87 | 40 |
| 50 x 67 | 127 x 170 | 38 x 67 | 97 x 170 | 36 x 67 | 91 x 170 | 29 x 67 | 74 x 170 | 90.75 | 231 | 11-1/2 x 11-3/4 x 100 | 29 x 30 x 254 | 101 | 46 |
| 60 x 80 | 152 x 203 | 45 x 80 | 114 x 203 | 43 x 80 | 109 x 203 | 34 x 80 | 86 x 203 | 104.75 | 266 | 11-1/2 x 11-3/4 x 114 | 29 x 30 x 290 | 121 | 55 |
| 69 x 92 | 175 x 234 | 52 x 92 | 132 x 234 | 50 x 92 | 127 x 234 | 39 x 92 | 99 x 234 | 118.75 | 302 | 11-1/2 x 11-3/4 x 128 | 29 x 30 x 325 | 138 | 63 |
| 87 x 116 | 221 x 295 | 65 x 116 | 165 x 295 | 63 x 116 | 160 x 295 | 49.5 x 116 | 126 x 295 | 145.75 | 370 | 11-1/2 x 11-3/4 x 155 | 29 x 30 x 394 | 177 | 80 |
| 108 x 144 | 274 x 366 | 81 x 144 | 206 x 366 | 78 x 144 | 198 x 366 | 61 x 144 | 155 x 366 | 170.75 | 434 | 11-1/2 x 11-3/4 x 180 | 29 x 30 x 457 | 198 | 90 |

NOTE: ALL SCREEN SIZES LISTED ARE VIEWING AREAS.

*NOTE: Add 3" overall length of case for mounting brackets.

Overall case length dimensions ±1/4".

All sizes come standard with 12" black drop at top. Extra drop may alter case dimensions. Contact Da-Lite for details.

Detail dimensional drawings, wiring diagrams and installation instructions available upon request.

Specifications subject to change without notice.

WHEN ORDERING MAKE APPROPRIATE SELECTIONS:

Select size from chart above.

Viewing surface:

- Da-Mat™
- Audio Vision
- High Contrast Da-Mat™
- High Contrast Audio Vision
- Cinema Vision
- Da-Tex (Rear)
- High Contrast Cinema Vision
- High Contrast Cinema Perf
- Pearlescent
- Dual Vision

Optional Accessories:

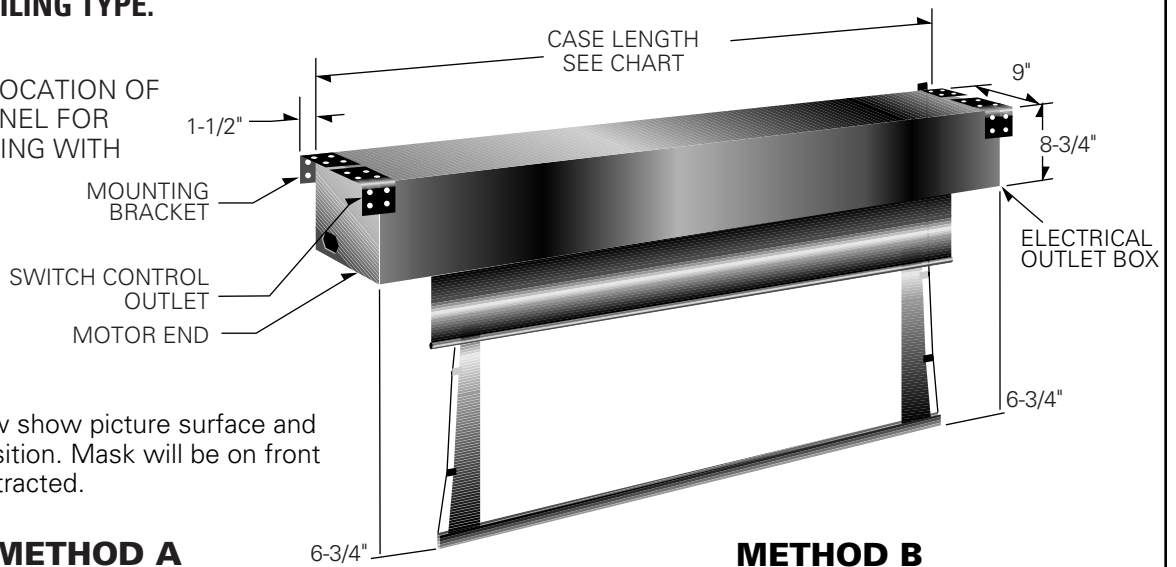
- 220 Volt (50Hz) Motor.
- Infrared Wireless Remote Control.
- Radio Frequency Wireless Remote Control.

| | |
|-------------|-------|
| Project: | _____ |
| | _____ |
| Architect: | _____ |
| | _____ |
| Phone: | _____ |
| | _____ |
| Contractor: | _____ |
| | _____ |
| Phone: | _____ |
| | _____ |
| Supervisor: | _____ |
| | _____ |
| Phone: | _____ |
| | _____ |
| Date: | _____ |
| | _____ |
| Revised: | _____ |

TENSIONED HORIZON ELECTROL® METHODS OF INSTALLATION

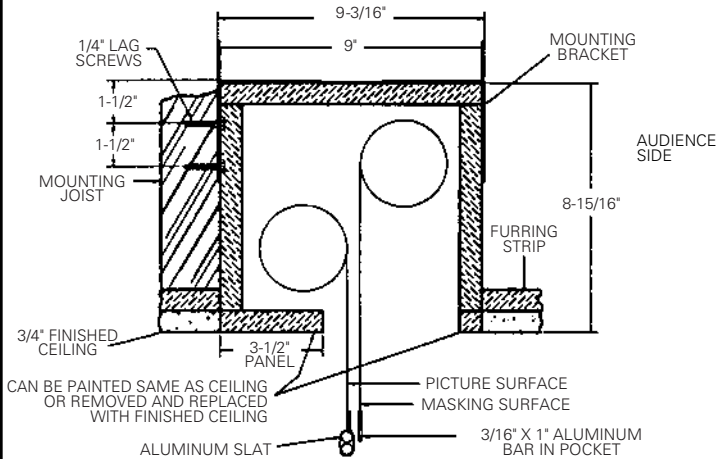
SELECT INSTALLATION METHOD ACCORDING TO CEILING TYPE.

NOTE:
MUST MARK HOLE LOCATION OF
SCREWS IN 3-1/2" PANEL FOR
REMOVAL, IF COVERING WITH
TILE.



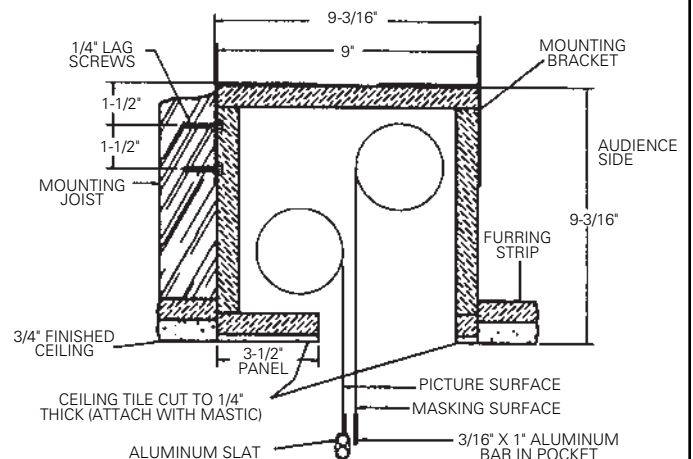
NOTE: Drawings below show picture surface and mask in the down position. Mask will be on front side of roller when retracted.

METHOD A



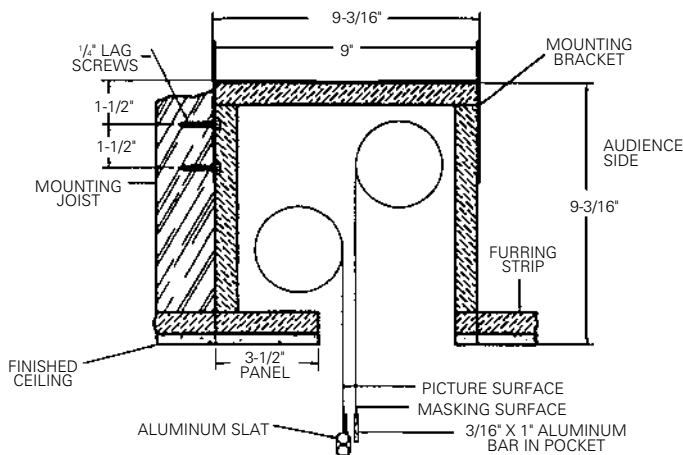
Offset mounting, recessed above ceiling. For plaster, dry wall, tile or paneling. Bottom of case painted same finish as ceiling.

METHOD B



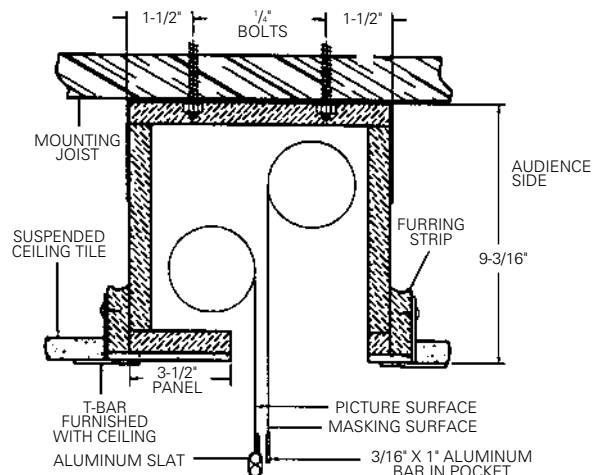
Offset mounting, recessed above ceiling. May be adapted for 3/4" ceiling, but cut to 1/4" thick under screen case and panel.

METHOD C



Offset mounting, recessed above ceiling. May be adapted for 1/4" paneling for ceiling.

METHOD D



Flush mounting, recessed above ceiling. For use with dropped ceiling. May also be adapted for use with acoustical or other ceiling 3/4" thick but cut to 1/4" thick under screen case and panel.